



TURNSTILES TRIO



GateSet *Classic Line* GT-3100 Series Waist Height Trio Turnstiles are robust products functioning indoor or outdoor, provide pedestrian access control in areas requiring moderate level of security. Classical compact case design, manufactured from 1.5 mm 304 grade stainless steel, enhances the robustness of GT-3100 series, while providing more room at tight installation areas. With proven ability to handle massive crowds in places like subways or stadiums, Trio Turnstiles ensures robust solutions for crowd control.

ACCESS CONTROL *TURNSTILES*



CLASSIC LINE GT-3100 SERIES



GT-3100

- Flat Top
- Recommended For:
 - * Handling 2,000+ users / day
 - * Ease of passage with flat top



GT-3140

- Angled Top
- Recommended For:
 - * Handling 2,000+ users / day
 - * Easy integration with embedded mounted readers



GT-3104

- Flat Top
- Emergency Drop Arm Feature
- Recommended For:
 - * Handling 2,000+ users / day
 - * Ease of passage with flat top



GT-3144

- Angled Top
- Emergency Drop Arm Feature
- Recommended For:
 - * Handling 2,000+ users / day
 - * Easy integration with embedded mounted readers

DATASHEET *TURNSTILES*





FEATURED CHARACTERISTICS

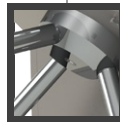
- **Classic Design** Aesthetic outfit with satin finishing



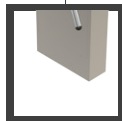
- **Reliable** Heavy duty mechanics, reliable electronics ensures a long product life with minimum maintenance



- **Flexible** Ease of integration with all access control equipment through its electronic control card



- **Robust** Case and tripod arms are manufactured from 1.5 mm 304 grade stainless steel



- **Compact** Small footprint of Single Leg Case design provide ease of installation in tight areas and more room for passage and access control

USAGE AREAS

- **Access Control**
 - Fee Collection*
 - Access Restriction*
 - Business Centers*
 - Government Offices*
 - Sport Centers*
 - Industrial Plants*



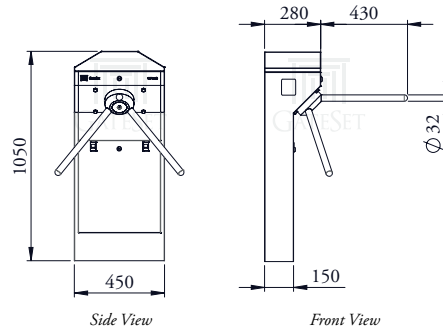
DATASHEET *TURNSTILES*



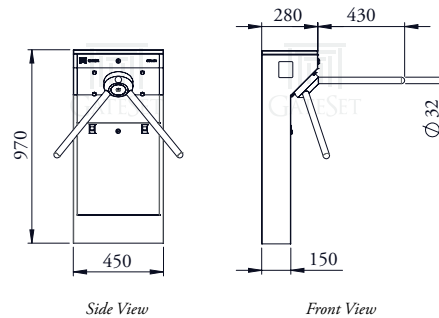


DRAWINGS AND DIMENSIONS

GT-3140 / GT-3144



GT-3100 / GT-3104



TECHNICAL SPECIFICATIONS

MATERIAL - MAIN BODY
MATERIAL - ROTATING ARMS
TREATMENT - OTHER PARTS
DIMENSIONS (mm)

ARM LENGTH (mm)
OPERATING VOLTAGE
NOMINAL / MAX. CURRENT
POWER CONSUMPTION
OPERATING TEMPERATURE
ACCESS CONTROL

POSITION DETECTION
DROP ARM FEATURE

WARNING INDICATORS

OPERATION MODE
DIRECTIONAL MODE

ROTATION CONTROL
CAPACITY
DESIGN

OPERATION SAFETY

ELECTRICAL FAILURES
CERTIFICATION
WARRANTY

1.5 mm 304 grade stainless steel, satin finishing

1.5 mm 304 grade stainless steel

All other parts are coated against corrosion

GT-3100 / GT-3104: 280 x 450 x 970 (WxLxH)

GT-3140 / GT-3144: 280 x 450 x 1050 (WxLxH)

430

115-240 V AC / 24V DC - 50-60 Hz

250 mA / 850 mA

30 W

-20 °C / + 70 °C

Microprocessor based control for granting access

Easy integration with all kind of access control equipment

Position detection with two separate micro-switches at mechanics

Dropping feature at each tripod arm providing ease of site evacuation at the case of emergency, in GT-3104 and GT-3144 models

Two separate warning indicators at front and rear sides of the gate.

Green arrow indicates "Passage Open", Red cross indicates "Passage Closed"

6 different operational modes available, programmed by means of software

Unidirectional and Bidirectional operation features as "Only Entrance",

"Only Exit", "Entrance and Exit"

Self-centered and smooth operation by means of spring and hydraulic damper

Handling more than 30 passengers per minute

While aesthetic classical case design provides good outlook, its modularity

ensures ease of installation and part replacement

Electrical and mechanical safety for all component. To avoid injuries,

all corners and sides are rounded

Main mechanism released and unlocked automatically. Arms rotates free

ISO 9001:2008, CE

2 Years

DATASHEET *TURNSTILES*